

# PHILLIP ISLAND CONSERVATION SOCIETY INC



## “The Penguin” Newsletter

Second Quarter: June 2013

Editors: Christine Grayden & John Eddy

[cgrayden@waterfront.net.au](mailto:cgrayden@waterfront.net.au) PH: 5956 8501

WEB SITE: <http://home.vicnet.net.au/~piconsoc>

LIKE US on Face book:

<http://www.facebook.com/picsvictoria>

### Dates for Your Diary 2013

Sat 6<sup>th</sup> July General Meeting, 7.30 p.m. Heritage Centre Meeting Room. Speaker: Ewan Cameron, Phillip Island Landcare.

Sun 7<sup>th</sup> July Red Rocks Coast Care planting day. Meet at RR car park 10 a.m. Refreshments to follow.

Sun 14<sup>th</sup> July Red Rocks Coast Care planting day. Meet at RR car park 10 a.m. Refreshments to follow.

Sat 28<sup>th</sup> September General Meeting, 7.30 p.m. Heritage Centre Meeting Room. Speaker TBA

Sun 29<sup>th</sup> September Red Rocks Coast Care working bee. Follow-up manual control of Blue Periwinkle. Meet at RR car park 10 a.m. Refreshments to follow.

Sun 17<sup>th</sup> Nov Red Rocks Coast Care working bee. As for 29<sup>th</sup> Sep.

Sat 11<sup>th</sup> January 2014: AGM

**Enquiries for all events:** Christine Grayden, ph 5956 8501 m 0400 900 612 e: [cgrayden@waterfront.net.au](mailto:cgrayden@waterfront.net.au)

**Barb Martin Bush Bank:** Sales and volunteers – every Wednesday + 1<sup>st</sup> Saturday of each month 10 – 1. Phone Anne Davie ph 5956 8216

**Friends of Koalas (FOK) Habitat Days:** First Sat of every month at 10 a.m. **Koala Count** at the Koala Conservation Centre, second Tuesday of every month at 10 a.m. Contact Patsy Hunt ph 5952 2407

**Biosphere – Bass Coast Round Table** meets at San Remo on the third Friday of every month at 8 p.m. Contact Jane Jobe, convenor: 0409 530 898

**Friends of Churchill Island (FOCIS): email:** [webmaster@friendsofchurchillisland.org.au](mailto:webmaster@friendsofchurchillisland.org.au)

**Groundswell** Bass Coast Climate Change action group: Neil Rankine 5672 1185 [neilnola@netspace.net.au](mailto:neilnola@netspace.net.au)

**Bird Life Bass Coast:** [janetfleming1@bigpond.com](mailto:janetfleming1@bigpond.com)

<p style="text-align: center;"><b>GENERAL MEETING: SAT JULY 6, 2013</b> <b>HERITAGE CENTRE MEETING ROOM, COWES</b> <b>Speaker: Ewan Cameron, President of Phillip Island Landcare, on Landcare</b> <b>news and current issues</b> 7.30 p.m. All are welcome!</p>
--

### PICS COMMITTEE 2013

President: Anne Davie (media contact 5956 8216) e: [bimbadeen@nex.net.au](mailto:bimbadeen@nex.net.au)

Vice President: Pauline Taylor ph 5952 5485

Secretary: Christine Grayden, ph 5956 8501 e: [cgrayden@waterfront.net.au](mailto:cgrayden@waterfront.net.au)

Minutes Secretary: Gillian Collins

Treasurer: Danielle Angel

Committee: Terry Nott, Steven Angel, Penny Manning (Chair of c/ee and sub c/ee meetings), Margaret Hancock, Jane Westworth, Darren Callesen.

C/ee meets at 10.30 a.m. on 4<sup>th</sup> Sat of each month at Community Room, Parish Hall Cowes.

## ***Letter to Members***

Dear Members,

The Bass Coast Shire Council will soon make its decisions on the Rural Land Use Strategy and Amendment 132 [Waterville]. There has been considerable community interest with regard to these issues as both will have significant impact on good planning outcomes.

And 2013 will finally see the closure of the Tip at Rhyll. The Council is starting a green waste collection trial, to run over the next 18 months. It will provide an alternative for Phillip Island residents, in designated areas, to dispose of the green waste they used to take to the Transfer Station.

PICS held a well-attended Sustainable Housing Forum in April in the Parish Hall. The Speakers were PICS member and architect, Terence Nott; Jane Toner, Director of Sustainable Built Environment; Russell Good, local housing designer; and Gillian Williamson, Statutory Planner BCSC.

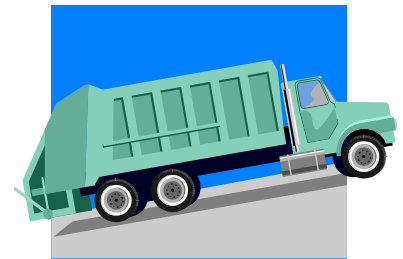
It is interesting to note that members of the PICS Committee are well represented on many environment groups – Groundswell, Friends of the koalas, Barb Martin Bushbank, Phillip Island Nature Parks Animal Ethics Committee, Phillip Island Nature Parks Community Advisory Committee, the Penguin Foundation, Port of Hastings, Western Port Biosphere, Friends of Churchill Island, Port Phillip and Westernport Catchment Management and Birdlife Bass Coast.

Caring about the Environment keeps us all busy!

*Anne Davie, President*

### ***The Tip!***

The Rhyll Transfer Station is soon to close, being handed over to the Phillip Island Nature Park. Although the councils have had many years warning of this, the alternatives being put in place do not seem entirely satisfactory. A kerbside green waste trial will commence for Cowes, Ventnor, Wimbleton Heights, Silverleaves and Rhyll, with the bin being emptied on alternative weeks to the recycling week. This is for garden and lawn clippings only. The cost is \$70 per half year. Larger green waste must be transported to the Grantville Landfill or Wonthaggi Transfer Station.



A “Cowes Recycling Bank” has been established at the Cowes BCSC Depot in Dunsmore Rd. This will accept recyclables up to one cubic metre per visit. Although the household waste kerbside pick-up will continue as normal, there is no facility on the island to dispose of extra household waste. That must be taken to Grantville or Wonthaggi. Hard waste collection is offered to every resident once a year for the “heavily subsidized price of \$25.00 for two cubic metres of waste” (BCSC *Waste Services on Phillip Island*).

PICS c/ee is fearful that the new arrangements are going to result in a great deal of dumping of all types of waste, especially in bush reserves, foreshores and roadsides. Especially at risk is Blue Gum Alley, which joins Dunsmore Rd at the industrial estate, and will almost certainly see an increase in traffic and rubbish dumping after the Recycling Bank is closed each day. PICS has written to Alan Bawden, BCSC CEO, and asked for an onsite meeting at Blue Gum Alley between facilities staff and PICS, Friends of Koalas and Bird Life Bass Coast, in an effort to protect the extremely valuable old habitat trees in Blue Gum Alley.  
*Christine Grayden.*



## RED ROCKS COAST CARE



Blue Periwinkle before and after spraying at Red Rocks foreshore reserve.

- \* Control of Blue Periwinkle: slow to die off, but now showing excellent results. Small amounts of regrowth to be follow-up sprayed in June. Thanks to contractors 'Evirogain'.
- \* Sea Spurge: Concentrated on hand-removal at both January and April working bees and made good progress in clearing it from a large section of the beach. Thanks to Steve, Sue, Bruno, Patsy, Maurice, Darren, Mike, Ross, Susan, Robert, Carol, Colin, Mark, Gary and Cr Kimberley Brown.
- \* We were unsuccessful in our Communities for Nature grant application this year, which aimed at continuing weed control follow-up. However, BCSC has agreed to fund this work, again targeting blackberry and bridal creeper, in addition to Blue Periwinkle control.
- \* Recent good rains have allowed us to do planting around Appley Track stairway, putting 60 plants in on June 2<sup>nd</sup>. Thanks to Marilyn, Patsy, Maurice, Sue, Daryl, Mike and Pip, and to Maurice for taking photos to accompany the completion report for this grant-funded project.
- \* Next working bee: 7<sup>th</sup> July, will be a planting day. Also the following Sunday if required. We will attempt to get in about 300 plants in a range of areas, but including some of the areas cleared of Blue Periwinkle from last year's herbicide application. Hope to see lots of you there.
- \* Nearby Bayview Park – some PICS members have made this a special project to revegetate this small patch of Melaleuca scrub that was being invaded by Pittosporum and other weeds. Cr Kimberley Brown generously provided \$500 towards plants to go in over the next few months.
- \* Many thanks also to Cr Kimberley Brown for her generous allocation of \$500 for equipment for Red Rocks Coastcare. We are planning the expenditure of these funds now.

## facebook

Have you been on the PICS facebook page yet? Over 240 people a week visit to catch up with Phillip Island environment news, and all the PICS action, including Red Rocks Coast Care photos and information. Find us at <http://www.facebook.com/picsvictoria>



# Western Port Biosphere

PICS is now a member of the Western Port Biosphere. Individuals and organisations can join to support the work of the Biosphere. Here is some information about the Biosphere from their website: (<http://www.biosphere.org.au/>)

“The Mornington Peninsula and Western Port Biosphere Reserve—known as the Western Port Biosphere Reserve for short—was declared by UNESCO in 2002, following nomination by the community, and state and local governments.

## *What is a biosphere reserve?*

UNESCO biosphere reserves aim to keep special places—like Western Port—special by fostering conservation and sustainable development.

They encourage the community to develop better ways to meet social and economic needs, while conserving natural processes and biodiversity. They support this through research, monitoring, education and information exchange.

Biosphere reserves include urban, industrial and agricultural areas as well as conservation reserves, and participation by landowners is voluntary. For management purposes, they are structured into three zones:

- Core—Conservation areas that are legally protected (e.g. national park).
- Buffer—Areas surrounding the core, where activities compatible with conservation occur.
- Transition—Other areas, e.g. private land, farms, industrial and urban areas, where sustainable practices are developed and promoted by the community.

There are over 500 biosphere reserves around the world.

## *Western Port Biosphere Reserve*

Western Port was chosen as a biosphere reserve because it has outstanding natural values, including a Ramsar wetland of international importance, on the fringe of the expanding city of Melbourne. Challenges include rapid urbanisation, port development and climate change.

Officially, the biosphere reserve covers approximately 2100 square kilometres, including the Mornington Peninsula, Western Port and the southern part of the Western Port water catchment. This area, known as Stage 1, was nominated to UNESCO in 2002.

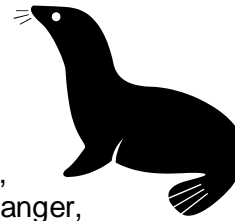
In future, following community consultation and government approval, it is proposed to nominate the balance of the Western Port catchment as Stage 2 of the biosphere reserve. This would increase its area to about 3400 square kilometres.

In the meantime, for management purposes, the five local governments around Western Port have agreed to operate as if the biosphere reserve extends to their boundaries, which together cover most of the Western Port catchment. They include Mornington Peninsula Shire, City of Frankston, City of Casey, Cardinia Shire and Bass Coast Shire.” PICS minutes secretary, Gillian Collins, sits on the Biosphere Board. One of the

Biosphere's projects is to build up numbers of Bandicoots in the Biosphere area, including at the wetlands reserve of Koo Wee Rup Secondary College, instigated in 1980 by PICS member John Eddy (who works there), and is now known Bandicoot habitat.

## Farewell to Roger and Marjolein

Press release from PINP 7.1.2013



Phillip Island Nature Parks has farewelled long-term seal researcher, Kirkwood, and wife and former fox researcher and Penguin Parade ranger, Polanen Petel, as they begin a new chapter in the Netherlands to their illustrious careers. Dr Kirkwood has taken up a position leading the seal research group for the Dutch Government. The decision sets Roger, Marjolein and their two children on an exciting new adventure to rival trips the pair has taken to Antarctica throughout their research careers.

Dr Roger  
Marjolein van

“Roger has made an enormous contribution to the conservation and management of Australian fur seals, not just at Seal Rocks, but across Australia,” said Dr Peter Dann, research manager at Phillip Island Nature Parks. “He has also played a leading role in the program to eliminate foxes from Phillip Island”, Peter said.

In his 15 years at the Nature Parks, Roger conducted over 100 research field trips to islands in Bass Strait and southern Tasmania. He has supervised 12 students, is an adjunct professor in the Faculty of Science and Technology at Deakin University, and has spearheaded numerous research collaborations with government agencies including the Australian Antarctic Division and CSIRO Fisheries. In 2001 he organised and co-convened the Southern Hemisphere Marine Mammal Conference on Phillip Island.

Despite the hours spent in the field, and raising a family, Roger has managed to publish 49 research papers and three books about seals, including two children's books. His latest work, a comprehensive insight into the biology and ecology of Australian fur seals, will soon be published through CSIRO Publishing.

Marjolein's contribution to research programs and visitor services at the Nature Parks has also been invaluable. Marjolein started at the Nature Parks in 2000 on a program aimed at investigating the usefulness of M-44 bait ejectors for fox eradication. The calibre of work, to which Roger also contributed, was recognised with a Victorian Coastal Council's award for Excellence in the category of Innovation in 2002.

Following the cessation of the M-44 project in 2003, Marjolein worked in research on a fox bait project. During her fox research, Marjolein developed a strong link with the Phillip Island Landcare group and was an active member of their committee for many years.

Later in 2003, Marjolein took the opportunity to go to Antarctica as an assistant for her sister, Tamara, working on Weddell seals. On her return from Antarctica, Marjolein continued her work with the Nature Parks, commencing as a night ranger. She again worked in research as a research assistant for two summers in 2004 and 2005 and has been a constant adviser on fox behaviour and research techniques.

“Marjolein and Roger's fox research has been instrumental in informing the strategy and success of Phillip Island Nature Parks' work towards eradicating foxes from Phillip Island,” said Dr Dann.

“Roger and Marjolein have been invaluable employees at Phillip Island Nature Parks and their knowledge and dedication to research excellence will be sorely missed.

“Their work creates a lasting legacy and their research will continue to inform our conservation and wildlife management decisions for many years to come.”

Roger will return briefly to Phillip Island next summer to conduct another seal pup count at Seal Rocks as part of the PINPs' population estimates at all Australian fur seal colonies conducted every five years. End press release.



In Roger's years with PINP he was responsible for raising over \$1.3m of research funding, writing 49 research papers, four books (including two children's books), delivered 38 conference papers, gave 130 public talks, over 100 media interviews, and peer reviewed about 200 papers. All this while actively researching a range of terrestrial animals, seabirds and seals, and mentoring many students. He also made four trips to the Antarctic as a researcher, and 21 as tour leader/ naturalist. Roger gave two presentations on seals to the PICS Children's Environment Mornings, teaching the children how to imitate seals scratching and moving on land. Thank you for all that you and Marjolein did for Phillip Island Roger, and our best wishes go with you for the next phase of your lives together in the Netherlands. (Extra information from Dr Peter Dann)

PHILLIP ISLAND CONSERVATION SOCIETY  
Minutes of the General Meeting held Saturday 6<sup>th</sup> April 2013  
Heritage Centre Meeting room, Cowes, 7.30 p.m.

1. Present: as per attendance book
2. Apologies: as per attendance book
3. The meeting was preceded by a Power Point talk given by Alison Creighton, Environment Manager, BCSC, who spoke about "The Environment Department and How We Work; What we are trying to achieve, and What we have planned for the year ahead". Alison also answered many questions from those present. Anne gave the vote of thanks and presented Alison with a "Phillip Island's Beautiful Coastline" poster.
4. Minutes of the previous meeting held Sat 12<sup>th</sup> January 2013. Margaret Hancock/Darren Callesen. Carried.

5. Matters arising:

- a) Saltwater Creek celebration: Anne Davie reported that the celebration was a great success and thanked Margaret Hancock for initiating the idea and organising the events.
- b) Fires on Beaches: Anne had asked the question at a Council meeting and it had been taken on notice. However, she has received no reply. There had been no community debriefing about New Year's Eve this year, but the fires are happening at other times too. She will ask the question again during Question Time at the Council meeting on Wed 17<sup>th</sup> April at the Cowes Golf Club.
- c) Illegal paling fences at Shearwater Estate. Bob Baird, a resident at Shearwater, reported that an internal war is brewing on the estate, as some support leaving the fences up and some want them down. The BCSC Planning Dept has responded to PICS on the issue saying they are going to act to have the fences removed.

6. Correspondence:

Inwards:

Email regarding Western Port Environment Research Seminar, Thurs 21 March 2013 at Cardinia Cultural Centre. Several PICS members attended.

Email from Public Affairs, Dept Sustainability, Env't, Water, Population and Communities re: Prime Minister's Environment Awards now open. Close Mon 22 April

Email from Rebecca Mouy, Development Approvals Manager with table of questions from PICS meeting with her, and responses.

b) Outwards:

Ltr to Regulations Officer, Courts Policy, Dept of Justice re proposed hikes in fees for VCAT

Email to Derek Hibbert BCSC asking when remaining pine trees to be removed from reserve adjacent to Woolamai House development.

BCSC Community grant application for 20 fluorescent vests \$450.

Pauline Taylor/Anwyn Martin, that the correspondence be received. Carried.

7. Treasurer's Report:

The report had been emailed by Dani Angel, Treasurer, and was presented by Christine Grayden. There was a query regarding \$110.00 left of DSE weed spraying grant, as RRCC Co-ordinator John Eddy was sure all the grant moneys had been spent.

Under Encumbered Funds, please change RRCA to RRCC

John reported that another (and hopefully final) round of weed spraying was needed as a follow-up from the grant spraying and that the contractors had quoted approx \$800 to do it. Members felt that the follow-up should be done.

“PICS would pay for the next round of spraying from RRCC Encumbered Funds if needed” Penny Manning/Pauline Taylor. Carried.

#### 8. Red Rocks Report:

John reported that the planting success rate was poor last season, but that coastal everlasting had done well. He will discuss paying for the weed spraying with BCSC’s David Martin. Previous sprayings had been largely successful, though some blackberry regrowth, and some patches of Blue Periwinkle still alive. Hope to treat manually after the next round of spraying.

#### 6. General Business:

Terry Nott reported that on Friday 26<sup>th</sup> April, 7.30 p.m. at St Philip’s Parish Hall, PICS will be holding a Sustainable Housing Forum speakers will be:

Jane Toner, architect and Director of the firm Sustainable Built Environments

Russell Goode, of On Shore Design and Drafting, Phillip Island

and a speaker from the BCSC Planning dept (TBC)

Terry will open the forum with a brief presentation, then each speaker will have 15 mins to speak with 5 mins or so for questions, so we are not anticipating a late night. We will have supper after the forum, and all councillors are invited.

Anne is to phone Hannah Duncan Jones who has not responded to Christine’s email or Anne’s phone calls, to try and get a speaker from the BCSC Planning dept.

#### Anne Davie:

Anne, Patsy (FOK) and Bessie Tyers (Birdlife Bass Coast) had met with Matt Jackson, CEO PINP on Tues 2<sup>nd</sup> April at 10 a.m. Matt had said that the hydro-geological assessment on the tip site will continue until 2030. There is currently a wallaby count. DSE is waiting to see numbers. PINP has written to BCSC to have Summerlands roads transferred to the Crown. They also talked about commercial development in National Parks. Matt also said that BCSC intends endorsing Scenic Island Estate (Chinamen’s) as a Conservation area.



As PICS President, Anne attended the launch of the Phillip Island Surfing Reserve. It was a very successful event.

Anne also attended the Artists’ Society of Phillip Island Easter Exhibition to congratulate the winner and Highly Commended artist for the PICS category on Celebration of the Environment of Phillip and Churchill Island. The prize was \$100. The winners can be seen on the PICS Facebook page.

“That a letter be written to Denis Napthine, Ryan Smith, with copies to Ken Smith and Greg Hunt, expressing the society’s objection to private developments in National Parks in Victoria”.

Margaret Hancock/Anwyn Martin. Carried.

Maurice Schenkel reported that he had attended the VCAT hearing of Isle of Wight VS BCSC for an extension of the planning permit. Isle of Wight lost and will not be given an extension. They were accused of “warehousing”, or of rolling over permits.

Meeting closed 9.20 p.m. Next General Meeting: Sat 6<sup>th</sup> July, 7.30 p.m., Heritage Centre Meeting Room.

*Phillip Island Conservation Society, Inc.*

## ***The Penguin Newsletter***

Second Quarter: June 2013

If undeliverable, return to:

PICS Inc.

PO Box 548

COWES, 3922

### **Planning Report:**

So far 2013 has been largely a matter of attending briefings and writing comment. PICS has commented on the proposed Rural Land Use Strategy and the Rural Activity Zone. PICS has also commented on the proposed redevelopment of the “Hollywood Hotel” at the corner of Justice Rd and Church St. The proposal is for a fairly intensive unit development, with virtually no ‘soft’ surfaces and no OPEN SPACE for the residents – or passersby – something which we DID achieve when the Boys Home at Newhaven was being considered.

After a lull of some years, we again are raising the issue of the need to protect Blue Gum Alley from unnecessary vehicle use. It is designated “Emergency Vehicles Only” and the signs are largely ignored.

The Victorian Government’s decision to raise VCAT fees and put participation beyond the financial reach of many citizens, is to be deplored. It’s up to us, as a Society, and as individuals, to take this matter up with our local Members of Parliament.

It seem that proposals for the “Isle of Wight” site are again coming into consideration. This is a very protracted planning issue – it is more than twenty years since PICS was first involved!

The Golf Club/Lechte land (now called “Waterville Cowes”) is meandering through the planning process, but now is set for a Hearing by Planning Panels Victoria in the first week of August – so we’ll have lots of solid work to do in the coming weeks.

*Margaret Hancock.*